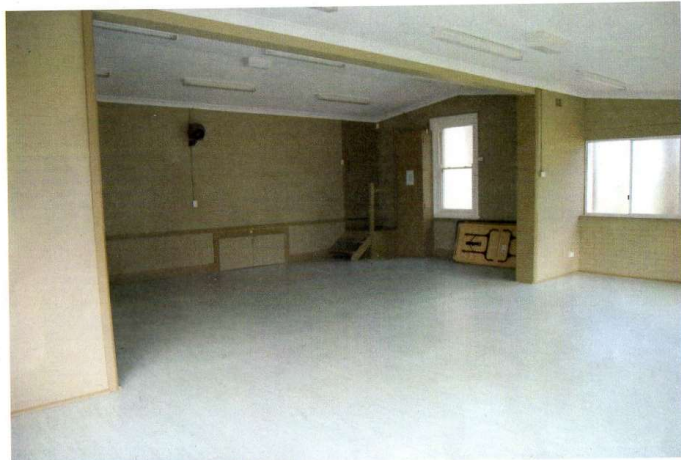
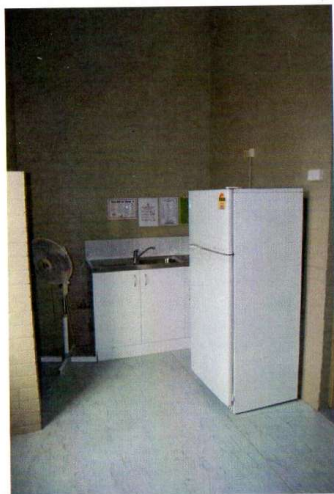


1. Melrose Hall 69 Great Western Highway, Emu Plains.

Features: Kitchen and Toilet

Constraints: Close to residential and play equipment

Comments: Meeting hall only for our use. Security needs upgrading. Used for weddings.  
Residents complain about noise.



2a. Mamre Farm 181-185 Mamre Rd., St. Marys  
Train Carriages

Features: Close to M4. Rural Setting,

Constraints: Small space, shared space, no amenities, rent unknown

Comments: Separate access, unserviced ECC facilities, Dept of Planning owned - secure future





2

2b. Existing Shed Space



2





3. CANA Community Farm – 100 Kingswood Rd., Orchard Hills  
 Features: Close to M4. Rural Setting,  
 Constraints: Shared with TAFE classes  
 Comments: Exclusive area possible, land only available, privately owned





4. 1<sup>st</sup> Jamison Scout Hall – 70 Glenbrook St., Jamisontown  
 Features: Existing shed space at rear, owned by PCC  
 Constraints:  
 Comments: Shared with Scout group and child minding centre



5. 1<sup>st</sup> South Penrith Scout Hall – 25 Taloma St., South Penrith  
 Features: Owned by PCC  
 Constraints: Residential area  
 Comments: Used by Guides, dance studio





6. 1<sup>st</sup> Penrith Scout Hall – 21-23 Lethbridge St., Penrith  
 Features: Owned by PCC  
 Constraints: Residential area  
 Comments: Used

*Lethbridge?*



6

7. House & Shed – 568 Great Western Highway, St Marys  
 Features: On GWH  
 Constraints: Heritage listed, white ants  
 Comments: Dept of Planning Owned



7



8. Skills West – Mamre Rd., Penrith  
Comments Owned by HVTG



8

9. Maintenance Shed at old golf driving range – 2-70 Blaikie Rd., Jamison Town  
Features: Large space, quiet location  
Constraints: Damaged, no amenities



9